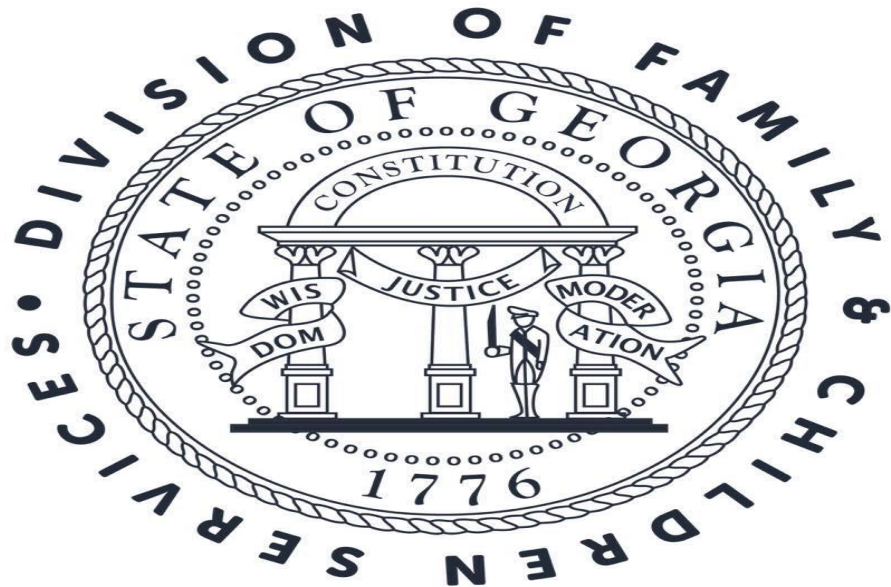
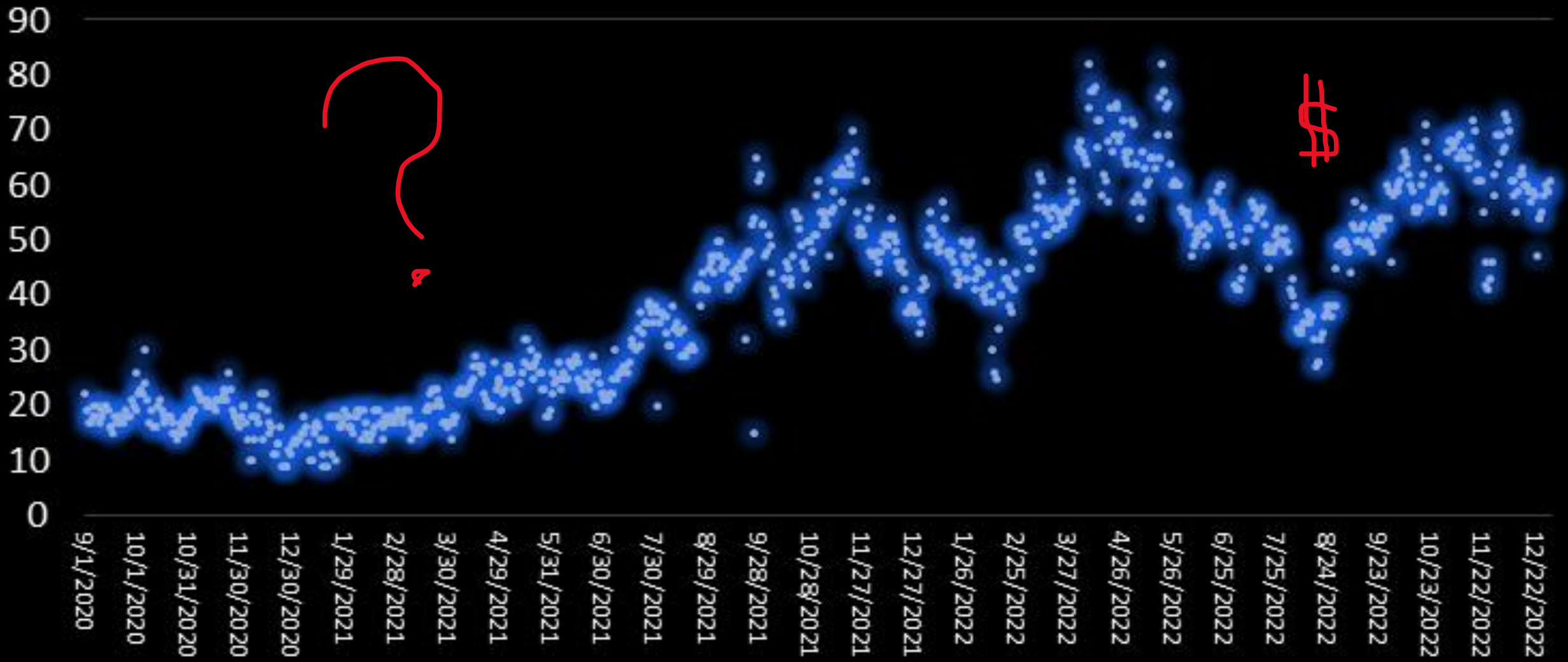


**AUDREY
BRANNEN, LCSW**

DFCS State
Complex Care Coordinator

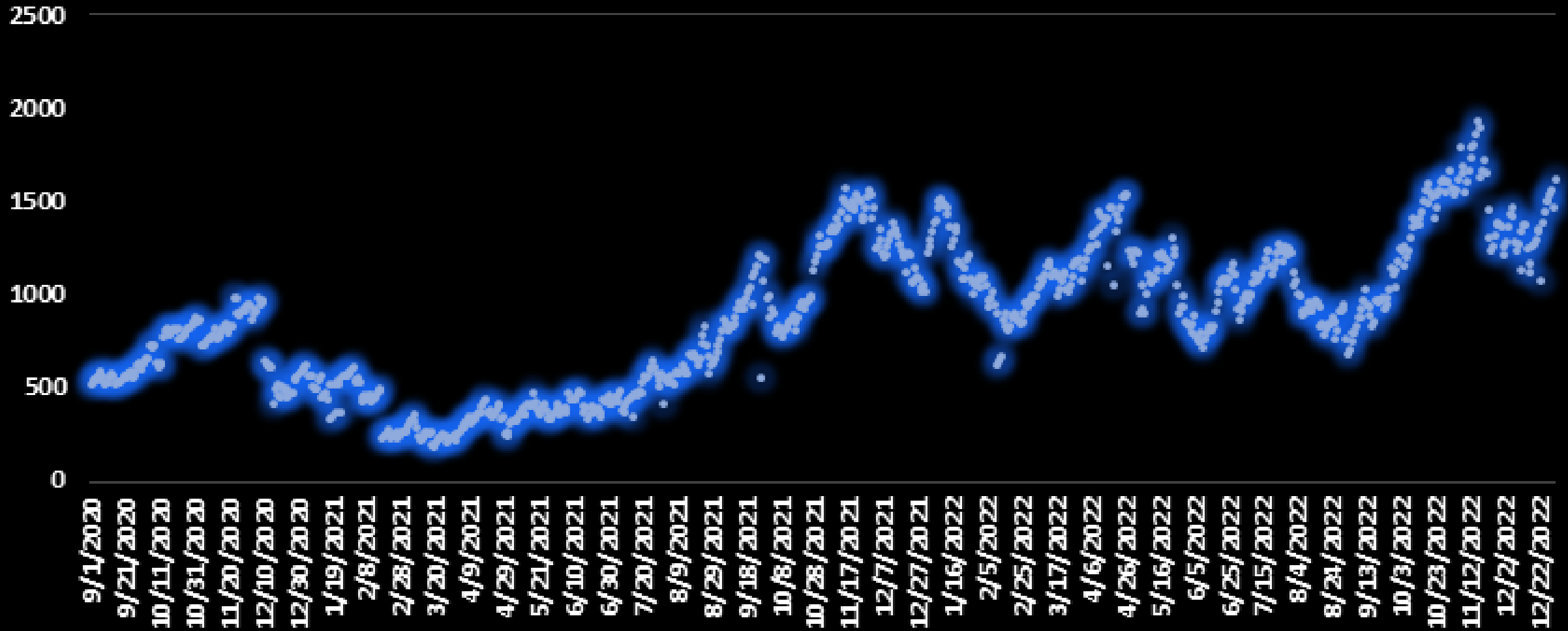


Total # of Children Without Placement / per Day



DIVISION OF FAMILY & CHILDREN SERVICES

Total # of Days Without Placement / per Day



Why is the data SO hard to nail down?

Because its LIVE and changes every single day. You know the phrase herding cats..... that's what this is like.

July 2021 – June 2022
 July 2022 – Nov 2022

Row Labels	Distinct Count of Child's name
FY22	921
FY23	451
Grand Total	1234

DIVISION OF FAMILY & CHILDREN SERVICES

	March 1st	March 7th	March 15th	March 17th
Total Youth In Hotels	70	59	70	70
Less than 10 Days	22	17	30	20
10 - 20 Days	18	15	12	13
Over 60 Days	8	8	5	7
Over 90 Days	4	5	3	5

Systemic Strategies

- State supported provider staffing – staffing provided to 10 high end providers in order to increase bed capacity Feb 22 – Dec 22 (1 provider currently)
- Amerigroup support – increased collaboration on high end youth, accountability for ensuring contact obligations are met and creative solutions explored – SubAcute Care Funding, Single Case Agreements
- DBHDD engagement - regular collaborative meetings at Exec Leadership Level
- DJJ engagement
- Juvenile Court engagement – frank discussions about family centered approaches to complex care youth
- Staff and Provider Education – Subject Matter Experts Available – partnerships between providers to assist with training
- Rate Increases for Placement Providers – blanket increase and MWO Enhanced Rate

Case-Specific Strategies

- Specialized placement finding and system navigation support (CCTU, Partner Agencies for CSEC victims, youth with autism or developmental delays)
- Attorneys to assist in systemic navigation and change (Well Being Attorney, Medicaid Attorney, Others)
- Placement Alternative Support Services (Complex Care Coordinator) – focus on accountability at all levels for youth without placements
- Extra support for complex care youth and caregivers – Emergency Services Grants, MAAC Network and MAAC Pact, grants to organizations willing to open up additional programming for complex care youth
- Empowerment of staff to alert the highest levels of leadership if they are being asked to pick up a complex care youth without a plan

And.....we still have 70+ kids in hotels.

- These youth WANT to be in foster homes (it's the number one thing I hear)
- They do BETTER in foster homes – what do you think happens when you take a big group of complex care kids and place them all together?
- FEAR is the biggest thing prohibiting foster parents from taking teens and youth with complex needs – make sure your foster parents are exposed to all age ranges and level of need – we are often afraid of things we are unfamiliar with
- The second biggest thing is the lack of support / resources – so let's identify that and have a plan!

Ways to Support Complex Care Youth and Caregivers

- Honor the matching process with a conversation with the case manager or placement finding staff about the youth
- Consider a pre-placement conversation between the foster parent and county staff
- Utilize multiple families to support each other – ensure families are connected to other foster families and foster parent support organizations (Chosen for Life, Promise 696, Called to Care etc)
- Ensure there is a respite plan in place in ADVANCE (including additional supervision)
- Solidify school /education enrollment in ADVANCE
- Yes we need placement immediately – but we need a prepared placement too!

- Make sure caregivers AND staff do not EXPECT the child to have BETTER behavior than what's presented just because they're in a foster home
- We must remember these kids come from family systems where chaos, detachment, and negative coping skills are the NORM so that's what makes them most COMFORTABLE. They will be UNCOMFORTABLE (which increases anxiety and potentially therefore agitation) in family systems that function more effectively - be prepared for that
- Ensure caregivers have reasonable expectations for the first few weeks – talk through the schedule – is it too overwhelming for the youth? The foster parent? What support can your agency offer those first few weeks?

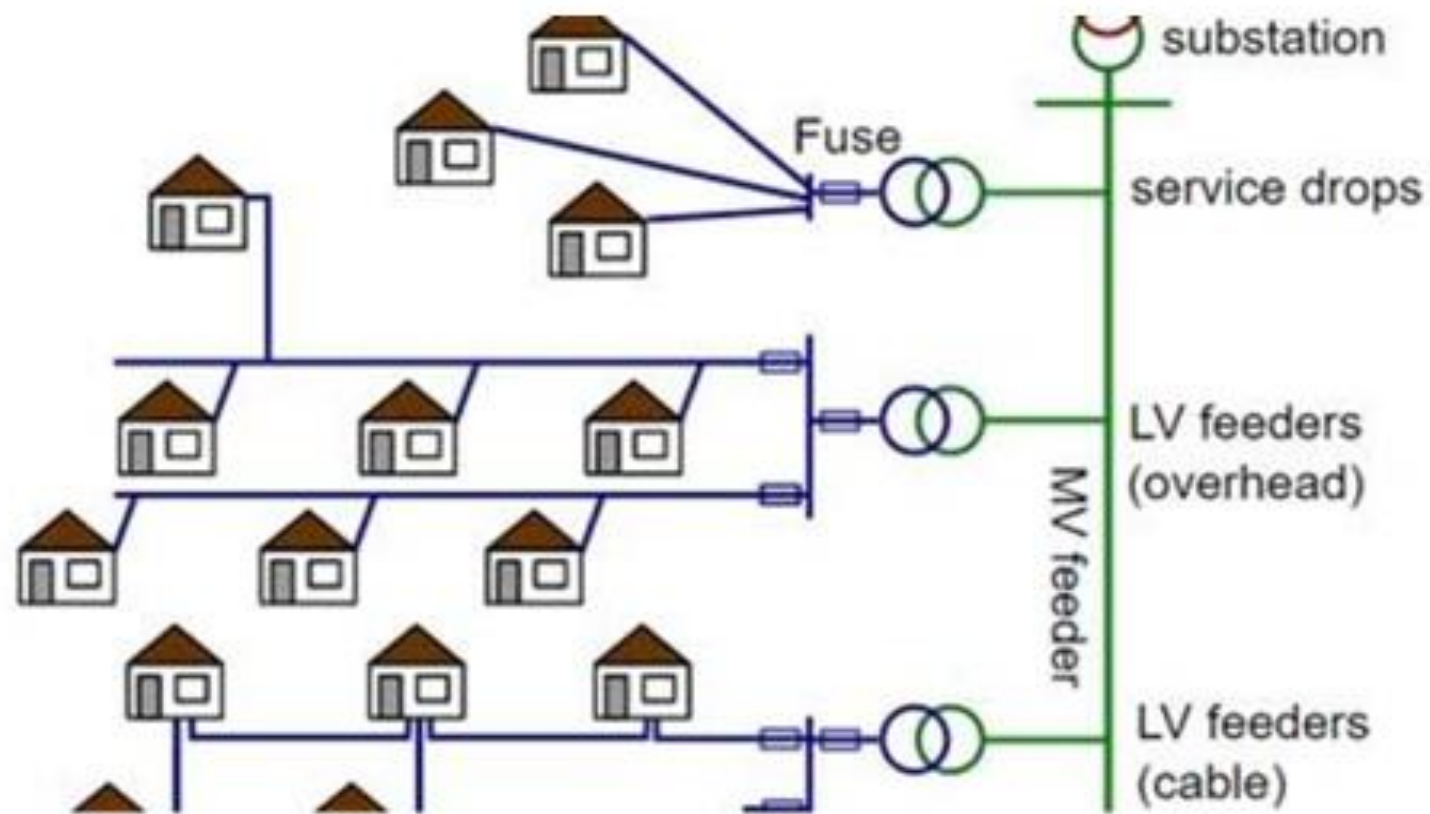
I need help! How do I get it?

- Be empowered to problem solve – don't wait for DFCS to provide services or support
- County Leadership / Chain of Command – County Director List
- Regional Education Specialist for school issues / concerns (EPAC)
- Request a team meeting, PAUSE staffing, or family team meeting
- Talk with Amerigroup Care Coordinator for any medical or mental health needs / services
- Contact your Monitoring Specialist with OPM
- Regional Adoption Coordinators (RAC) – for youth free for adoption
- Have a relationship with service providers in the area so they can begin services immediately with newly placed youth

Disruption Prevention

- Have regular contact with your caregivers – ESPECIALLY when things aren't going well
- Provide respite before respite is needed
- PAUSE when things get rocky – take a deep breath – have the foster parent take a deep breath – don't be OVERLY reactive
- Be clear that moving a child's geography doesn't change the child's behaviors – youth respond best to people who they have a RELATIONSHIP with – often if you stick with them for 6 months they settle down and settle in – ensure your agency models commitment to the youth and families
- Family Engagement! Ensure the biological family is engaged and connected to the foster family

Keep it a
“system”
 problem??



We have to avoid black and white thinking.

Are the challenges of complex care youth a problem to be solved or a truth to be accepted?

Is our work stronger together or in silos?

We can make progress in a very hard situation. We cannot solve it or fix it – to imply that we can is irresponsible.

We can hold all systems accountable without blaming them.

True collaboration is not criticism (especially publicly) – its non-blaming, solution focused and walking alongside each other.

Questions?

Audrey Brannen, LCSW

Complex Care Coordinator

Audrey.Brannen@dhs.ga.gov

706-621-1490